

State Trails Advisory Committee Meeting Nov. 17, 2020

- 10:00 Welcome
- 10:05 Agency diversity initiatives
- 10:10 Partnerships for trail development
- 10:30 Technology along the Trail
- 11:00 Virginia Tourism & Trail Dev.
- 11:15 Trail Lightning Talks
- 11:30 Input since last meeting
- 11:45 Topics for next meeting
- 12:00 Adjourn

Agency Diversity Initiatives

Nathan Burrell, DCR Deputy Director,
Government and Community Relations

November is Native American Heritage Month



A photograph of a paved path winding through a dense forest of tall, green trees. A person is riding a red motorized bicycle away from the camera on the path. The scene is bright and sunny, with sunlight filtering through the leaves.

Partnerships with utilities for trail development

Paul Gilbert
NOVA Parks

James Beazley
Dominion Power

www.pedbikeimages.org / Laura Sandt

Washington & Old Dominion (W&OD) Trail

Paul Gilbert
Executive Director – NOVA Parks

www.novaparks.com

45 miles

2-3 million uses a year



Rebuilding the urban areas for increased capacity



Power line corridors

James K. Beazley
Dominion Energy

**Cheryl White
Elizabeth River
Trail**

**Beth Lohman
Friends of the
Huckleberry
Trail**

**Chris Gensic
City of
Charlottesville**

**Mike Farrell
Metropolitan
Washington
Council of
Governments**

Technology along the Trail

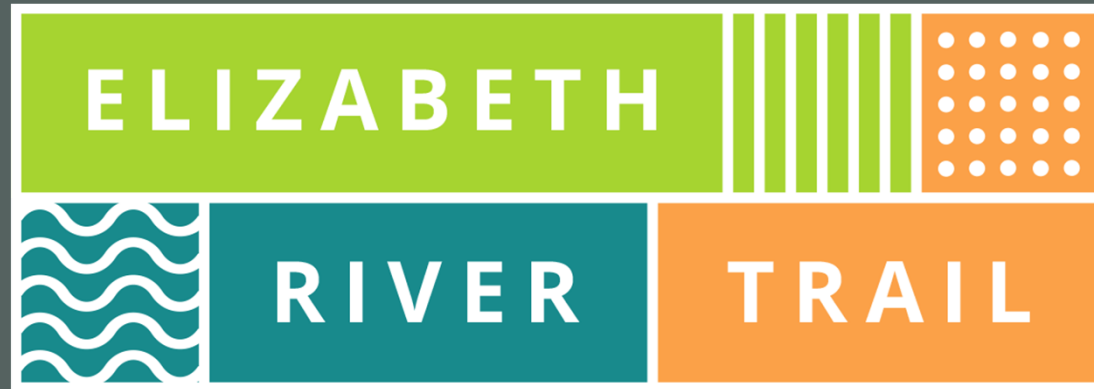


Elizabeth River Trail




aka Norfolk Smart Trail

Cheryl S. White, Executive Director
The Elizabeth River Trail Foundation

www.elizabethrivertrail.org



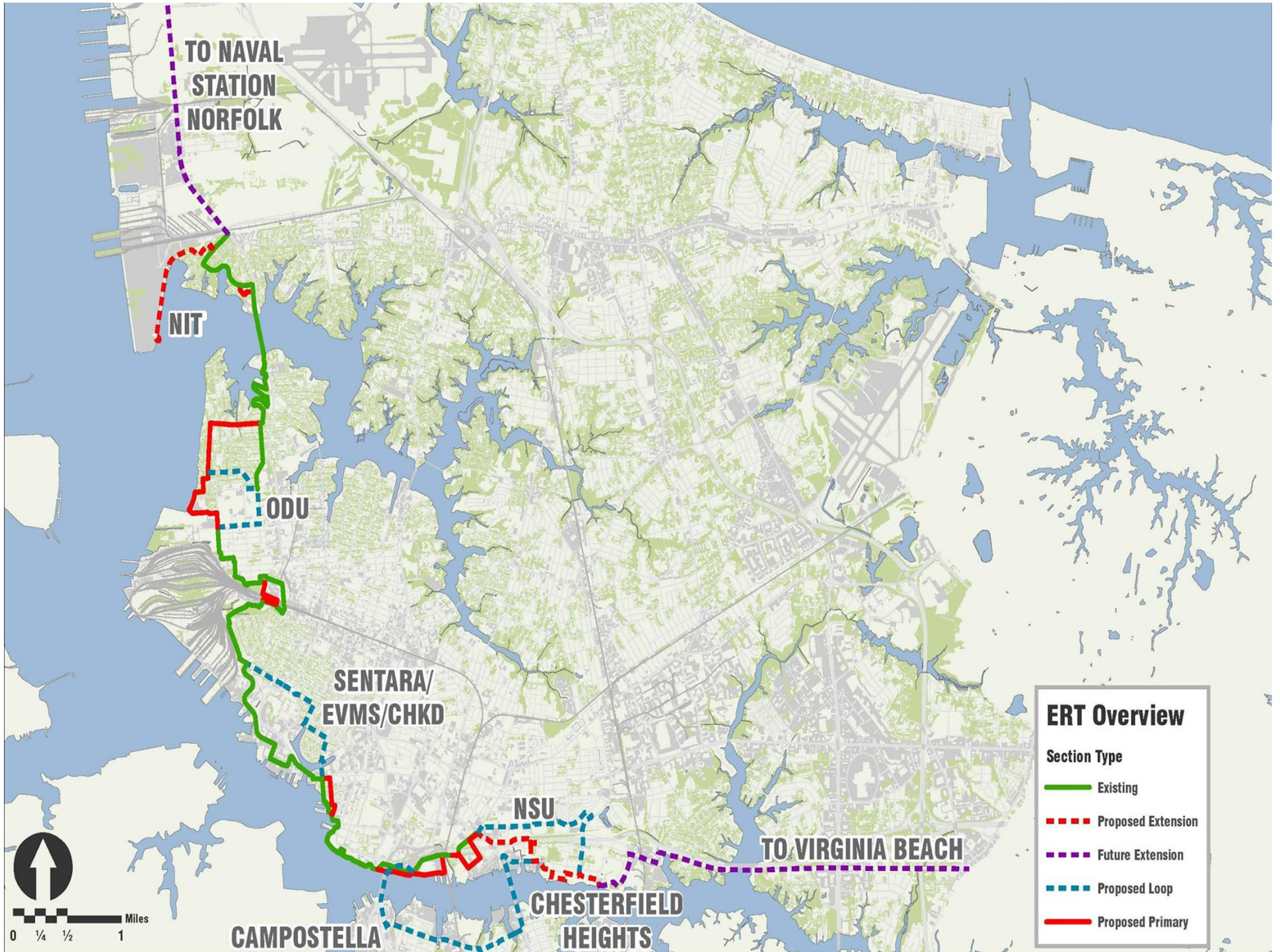
ELIZABETH



RIVER

TRAIL





THREE by Ellenburg + Shaffer at Freemason Trailhead





[Signs Installed Video.mp4](#)



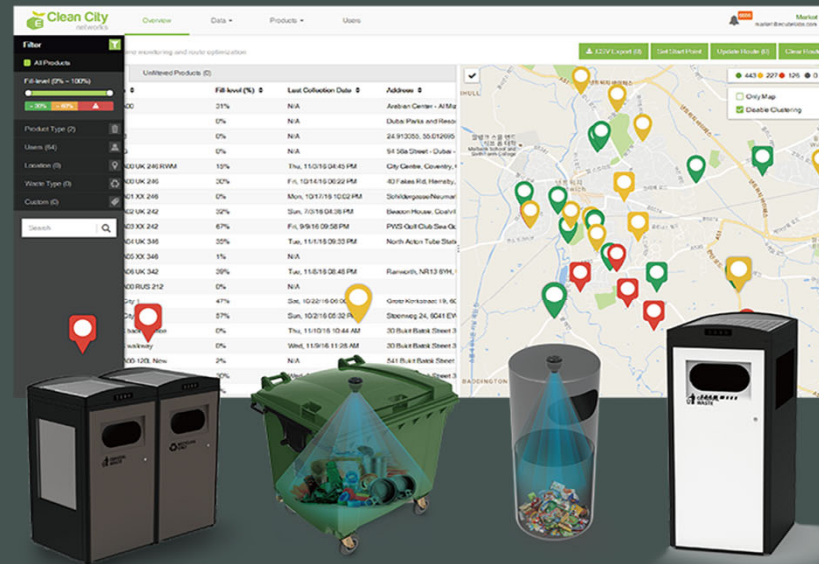
Norfolk Smart Trail

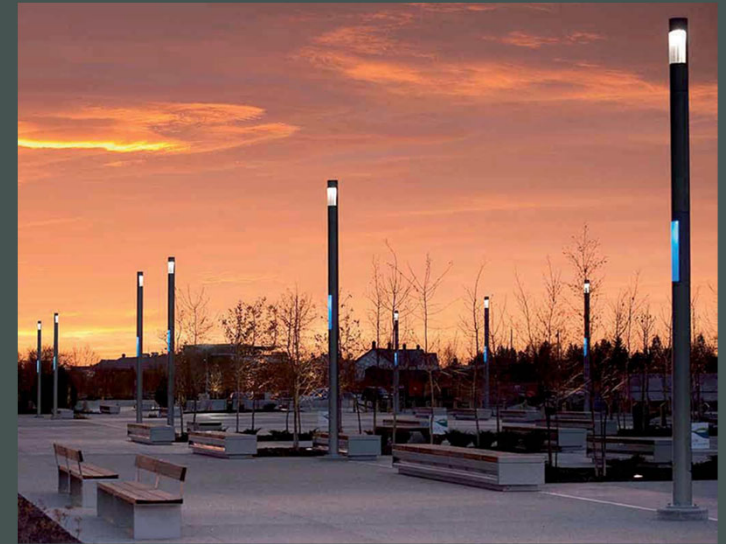
PROJECT DESCRIPTION

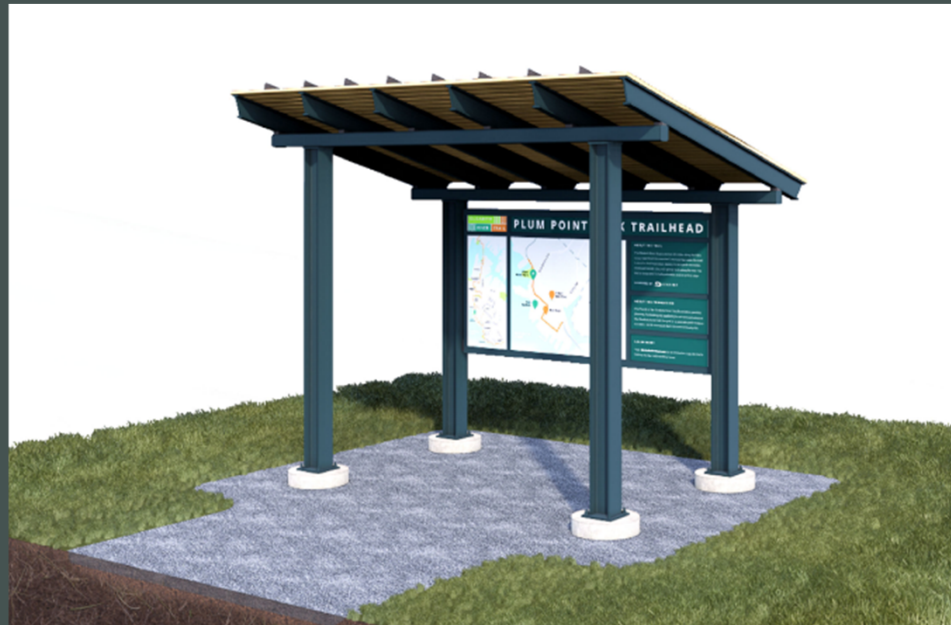
Virginia's First Smart Bike and Pedestrian Trail

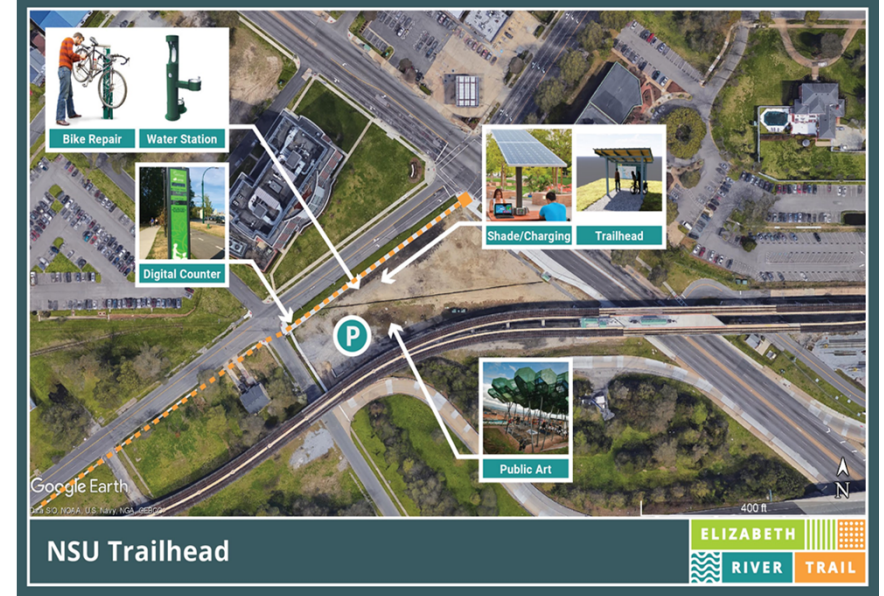
Build smart city infrastructure into the 10.5-mile Elizabeth River Trail. Building a smart infrastructure into the ERT will enable the region to test different pieces of smart technologies, pick and choose the best options, and then scale throughout the rest of our region for use as part of and on the regional connectivity ring.

The ERT links residential, commercial, cultural, institutional, and entertainment venues such as Town Point Park and provides a perfect test bed for innovative technologies.

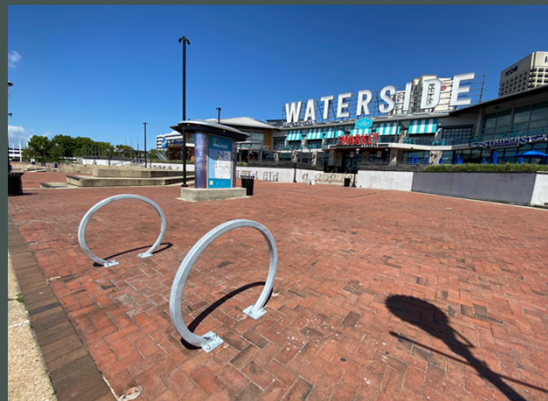








New Basic Amenities: 12 trash cans, 12 bicycle repair stations, 24 new bike docks



Kayak Launch at Plum Point Park Trailhead



Double Turbo Challenge Course Plum Point Park Trailhead



Play Sculpture and Meditative Walking Labyrinth at Plum Point Park Trailhead



***Coming Soon* The Glowline at Jeff Robertson Park Trailhead**



The Glowline renderings by Work Program Architects



smartmouth PEDAL PUSHER BINGO

PIZZA PARTY! CARRY A PIZZA BOX WHILE RIDING YOUR BIKE	FIND "LOVE" IN THE BRAMBLETON UNDERPASS	HIGH-FIVE SEND AND HIGH-FIVE FIVE CITY OF NORFOLK HELMETS	GROCERY GETTIN' MAKE AN ESSENTIAL STORE RUN ON YOUR BIKE	BEER RUN! WHOLE SHEBANG OR AWWKWARD SILENCE
TACO TUESDAY! TAKE A BEER TACO PIC!	MYSTERY CLUE COMING MAY 30*	EXPLORE NEON DISTRICT FIND THE BEES ON BIKES	BEER RUN! MISLEARD LYONS' MUGGOTS AND A SPELDO	MYSTERY CLUE COMING MAY 5*
WHALE HELLO THERE! TAKE A SELFIE AT THE WHALE WALL	SUNSET SELFIE MAKE A MEMORY WITH YOUR FAVORITE SMARTMOUTH BEER	BEER RUN! PEDAL PUSHER IPA	SHELTER IN PLACE AT THE LAFAYETTE PARK GAZEBO	DISCOVER THE COLONIAL PLACE BEADSWALK
SOCIAL DISTANCE SOLVE TAKE A PIC OF A SOCIALLY DISTANT BIKE RIDER WITH BUGS	BEER RUN! PLANNED OBSCULENCE IPA	PATH TO SUCCESS RODE THE GHOST BIKE LOOP	MYSTERY CLUE COMING MAY 10*	RAMP UP CITY KAYAK UP LAUNCHES
BEER RUN! FREE THOUGHT PALE ALE	MYSTERY CLUE COMING MAY 20*	SUCH GREAT HEIGHTS SNAP A PIC OF THE CITY FROM THE SKYLINE	FERRY GOOD! NOW TAKE YOUR BIKE ON THE WATERSIDE DISTRICT FERRY	GOING THE DISTANCE RODE THE ENTIRE DIST. TAKE PICS AT THE START AND FINISH

*MYSTERY CLUES WILL BE ANNOUNCED ON SMARTMOUTH'S INSTAGRAM STORY ON THE DATES MENTIONED ABOVE!

#traingrazing BINGO

PIZZA MISTERY CLUE COMING SEPT 17*	BREAKFAST TIME SUNSET SNACKS	COFFEE
BRUNCH IT UP TACOS	MYSTERY CLUE COMING OCT 4*	EAT NEWSLETTER SIGN UP
GO GLOBAL FOR LUNCH	REPAIR SHAKE THE COFFEE TAG #REPAIRSOLIX #REPAIRSOLIX2020	BURGER
SWEET TREAT	PHOTO OF PICKING ON BEST	MYSTERY CLUE COMING SEPT 29*
ITALIAN DINNER	PICK UP TO-GO FROM A TRAILER RESTAURANT	DONATE TO EST FOUNDATION
MYSTERY CLUE COMING SEPT 22*	CHEESE PLATTER / CHARCUTERE	BEER WINE RECKTAIL
SHOW US THE VEGGIES	BTE W BEX	

*MYSTERY CLUES WILL BE ANNOUNCED ON ERT'S INSTAGRAM STORY ON THE DATES MENTIONED ABOVE!

ROUTE #5: Memorial Day Ride

CYCLE 12 MILES 90 MINUTES
MACARTHUR MEMORIAL TO MACARTHUR MEMORIAL

Military & Historic Route Highlights:

- MacArthur Memorial
- Armed Forces Memorial
- Battleship Wisconsin
- Wisconsin Square / Lone Soldier Sculpture
- Historic Freemason
- Historic Fort Norfolk
- Highland Park Veteran's Kayak Launch
- Colonial Place
- WW II Memorial
- Great America XVII Mural

VIRTUAL BIKE RIDE SERIES

Botanical Highlights of the ERT

LEGEND

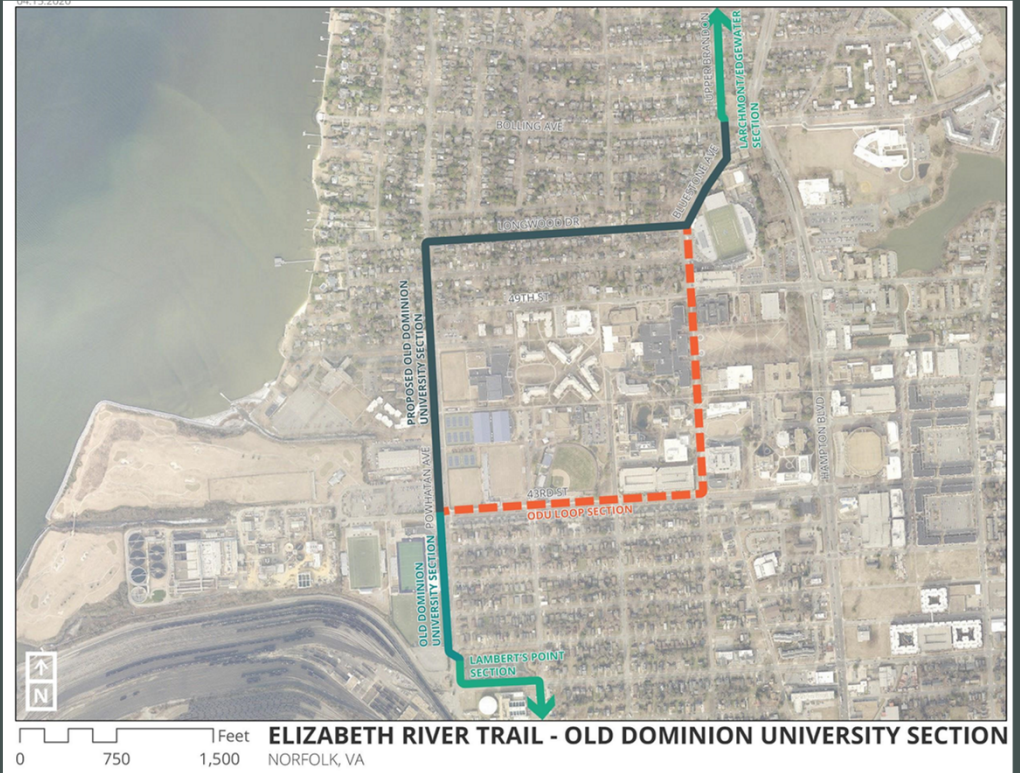
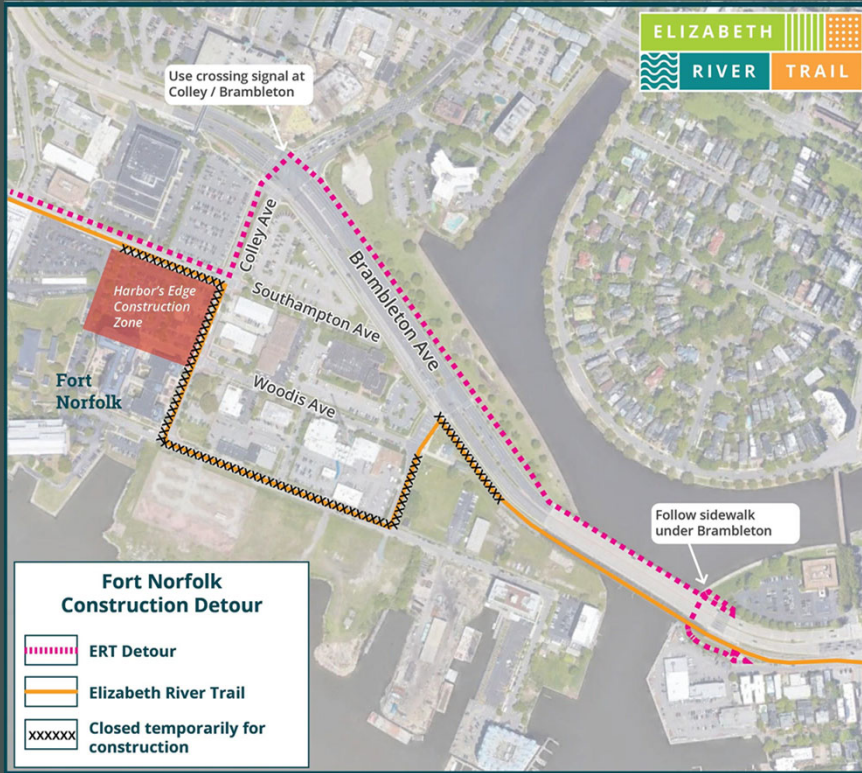
- Public Parking
- Bike Repair Station

BOTANICAL POINTS OF INTEREST

- Hermitage Gardens
- Lochaven Living Shoreline Restoration
- Larchmont Library Habitat Restoration and Living Legacy Grove
- Myrtle Park Shoreline Restoration
- Redwood Tree at ODU's Brick Field
- Kaplan Orchid Conservatory
- Lambert's Point Retention Pond
- Lambert's Point Microfarm
- Weyanoke Bird and Wildflower Sanctuary
- Redgate Pine Grove
- Washing Tree on Redgate
- Edible Orchard and Wildflower Meadow
- Pagoda Gardens



Detours & New Loops

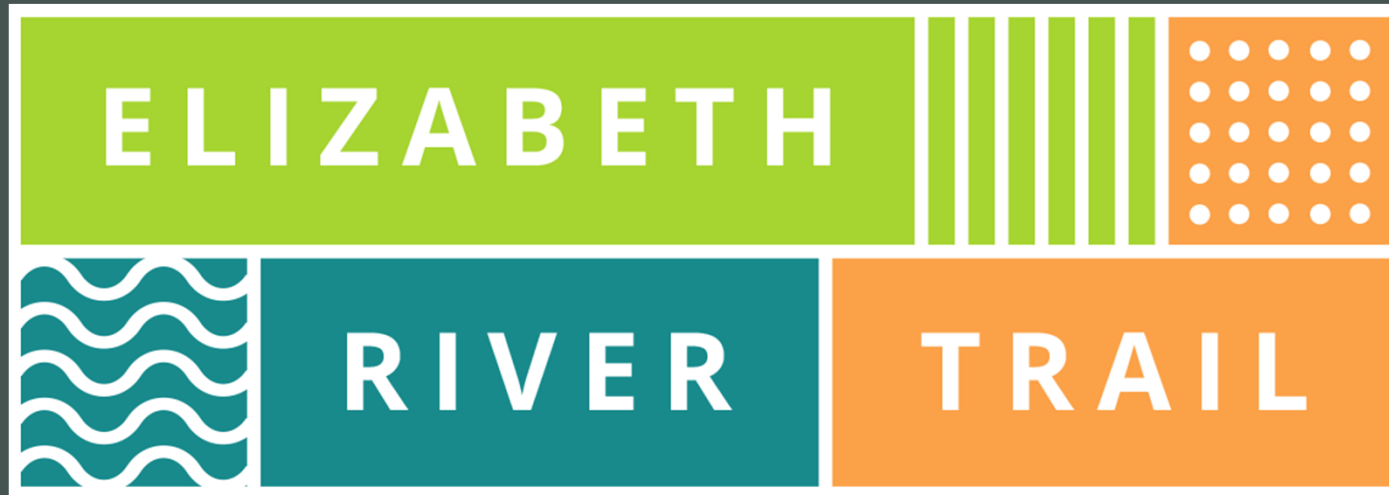


Hampton Boulevard Projects





Conceptual renderings by Work Program Architects



Stay up-to-date on upcoming trail improvements,
events and volunteer opportunities

Sign up for our newsletter at:

elizabethrivertrail.org

Follow us:

Facebook / Twitter: @norfolkERT

Instagram: @ertnorfolk

Heyward Trail

Chris Gensic

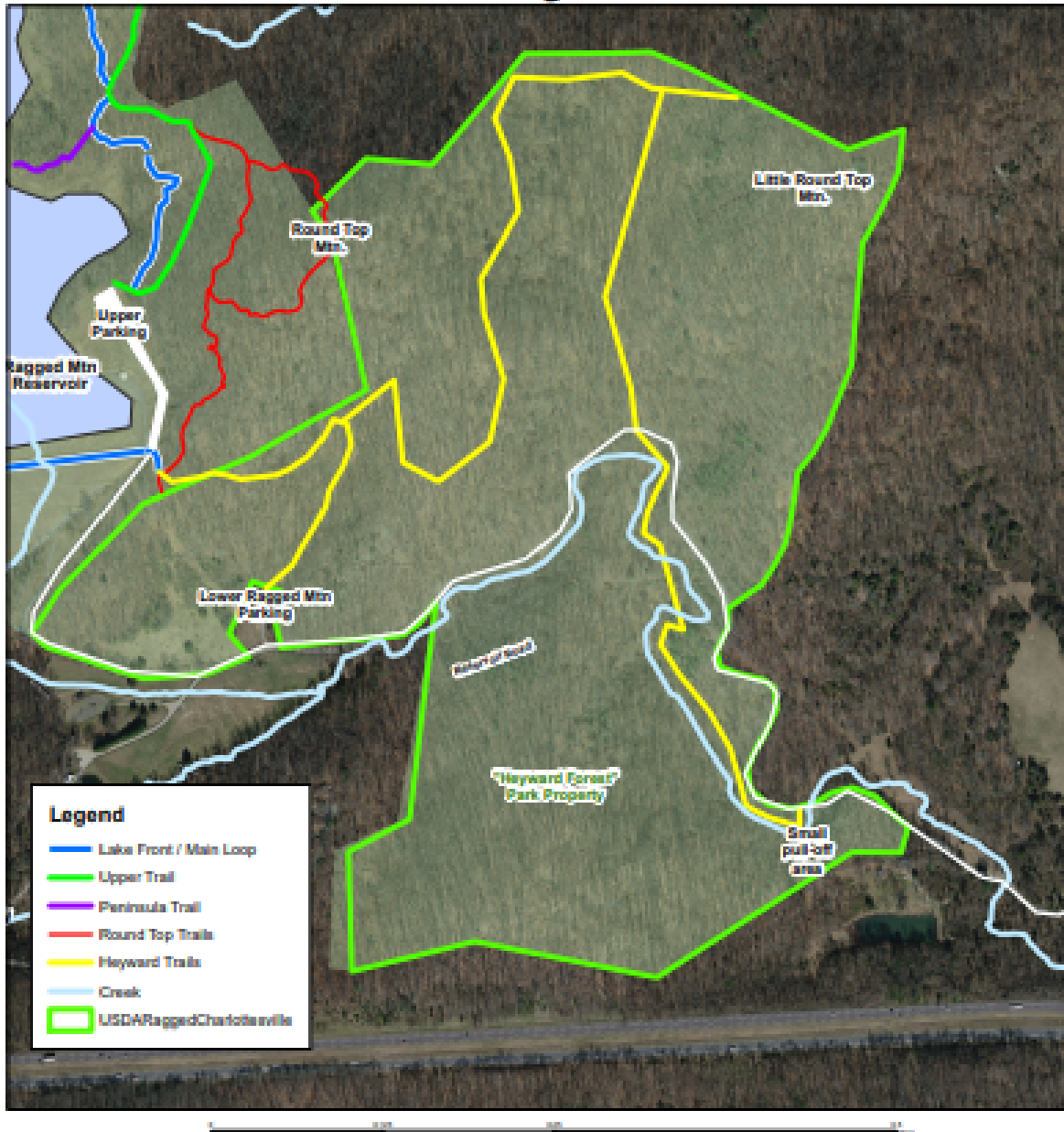
Park and Trails Planner

City of Charlottesville

<https://www.charlottesville.gov/Facilities/Facility/Details/Heyward-Community-Forest-66>



HEYWARD FOREST Trail System



Educational Posts on Trails



<https://www.charlottesville.gov/Facilities/Facility/Details/Heyward-Community-Forest-66>



Dear miss Louisa Heyward,
Thank you for generously donating
more than 100 acres. We enjoyed
the trails very much. If you
didn't donate the land
It would turn into a
housing development and
animals could not live there.
☺ It was breathtaking.
I Love this time of year.
thank you for taking some
time to read this letter.
Sincerely,

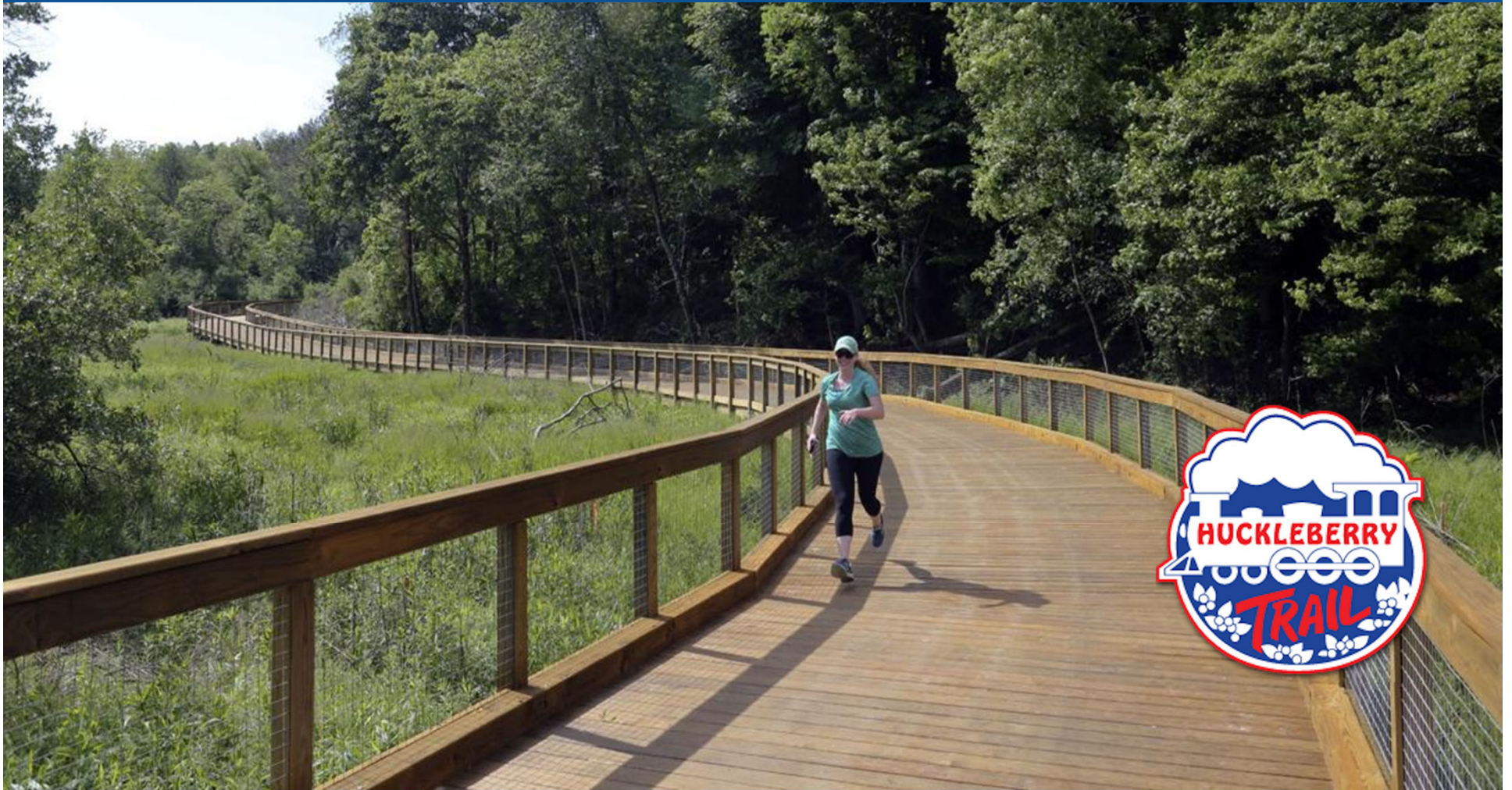
Rowan



Huckleberry Trail

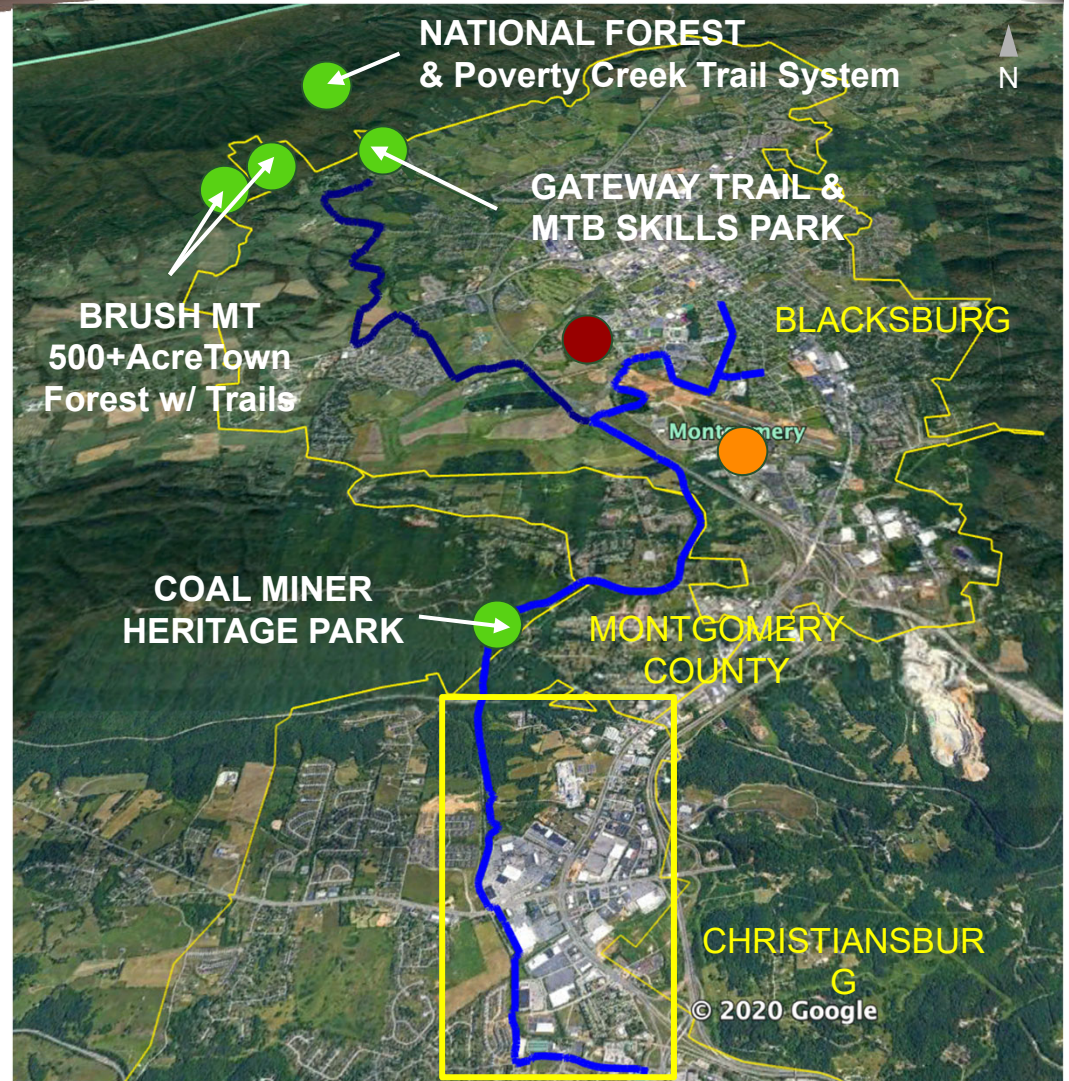
Beth Lohman, President
Friends of the Huckleberry Trail

Friends of the Huckleberry Trail



HUCKLEBERRY TRAIL

- Friends of the Huckleberry (formed in 1993)
- Four jurisdictions (Blacksburg, Virginia Tech, Montgomery County, Christiansburg)
- Approx. 15 miles of paved trail (shown in blue)
- Part of a continuous 40-mile (+) paved and natural surface trail network





EMERGENCY CALL BOXES (Christiansburg)

- Need driven by:
 - High profile incident despite very low crime rate
 - Response to medical emergencies
- Challenges:
 - No utilities along ROW
 - Lack of wireless service in certain locations
 - Placement: high-use areas, regular spacing, cell service
- Features:
 - Wireless and solar-powered
 - Push button actuation
 - Identifies call location
 - Open communication with dispatcher
 - Video capabilities
- Cost \$75K for nine units (w/ six along trail)

QUESTIONS



BETH LOHMAN

President

Friends of the Huckleberry Trail

friends@huckleberrytrail.org



BRAD EPPERLEY

Director of Parks and Recreation

Town of Christiansburg

bepperley@christiansburg.org

Street Smart Program

Michael J. Farrell

Senior Transportation Planner

Metropolitan Washington Council of Governments

www.bestreetsmart.net

Testimonial Wall



- Prince George's Plaza Mall, November 14-15
- DC USA in Columbia Heights on December 11-13
- Pentagon City Mall December 19-20.

Electronic Testimonial Wall



**HER
LIFE IS
FRAGILE.**

Yield to pedestrians
when turning.

STREET
SMART
BeStreetSmart.net

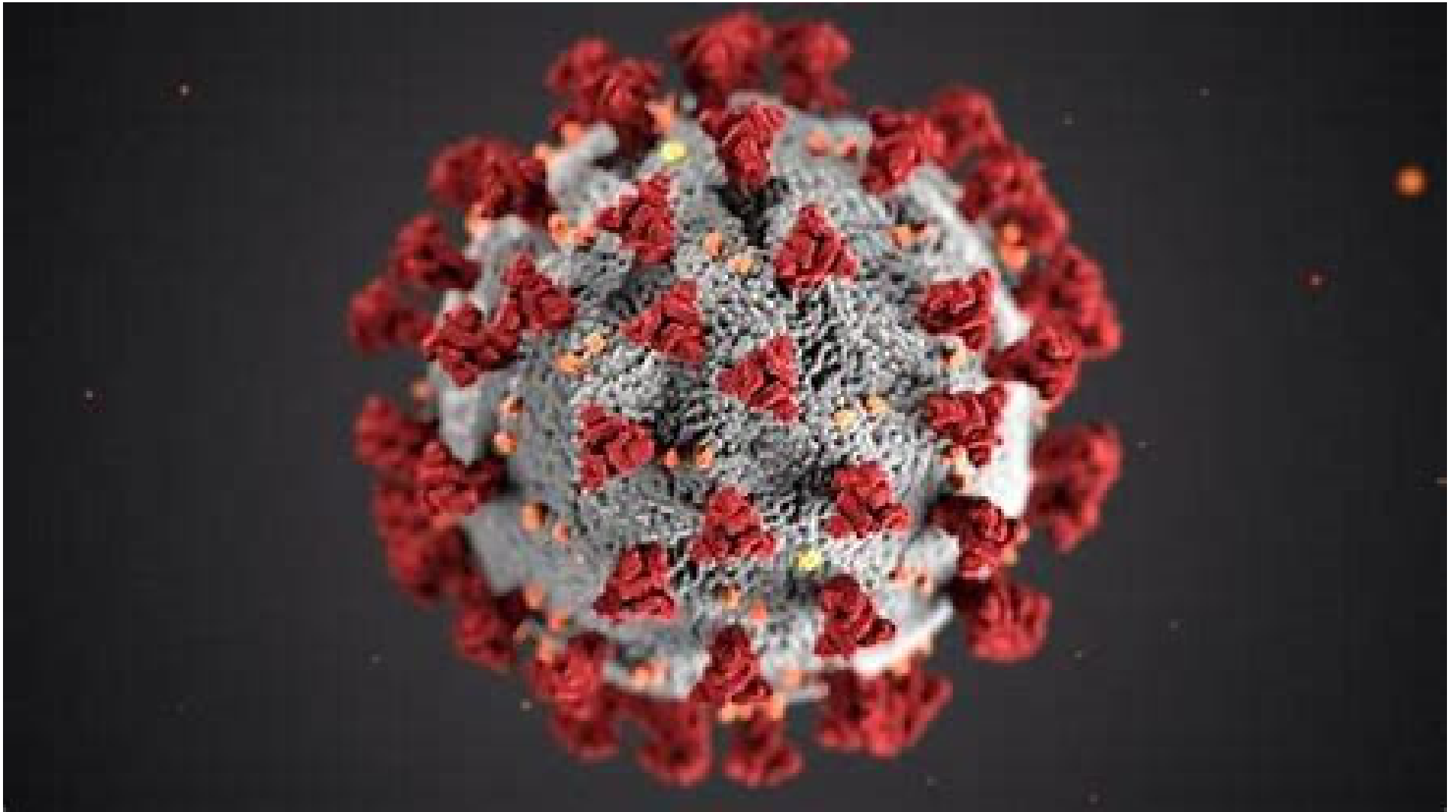
Trail Development Update

Steve Galyean, VTC Partnership
Marketing

VIRGINIA
IS FOR
LOVERS®

TRAIL DEVELOPMENT UPDATE

Steve Galyean
Planning & Partnerships Director



Tourism Industry Impact

- 45% below last year's levels for the week ending September 19th
- A \$10.0 billion loss when compared to the same week a year ago.
- Since the beginning of March, the U.S. travel economy's losses from the COVID-19 pandemic have exceeded \$386 billion.
- Travel spending in Virginia was \$292 million during the week ending 9/19, a \$239 million drop from 2019 levels.
- Virginia's weekly travel spending of \$292 million is a 45% decline year over year.



Tourism is a **resilient industry** and is **quick to recover** after **times of crisis**. As an **instant revenue generator** for communities, tourism continues to be a **smart investment**. It is the **fastest way** to help communities **get back on their feet**. Underscoring the **importance of tourism** will help your stakeholders **understand the power** it has to **turn** our economy around.

THE COVID-19 PANDEMIC

Anatomy of a recovery

Return to “normal” levels of travel will be a multi-year effort, with domestic travel leading followed by regional international and finally long-haul international.



DESTINATIONS

'Busiest camping season': Travelers choose outdoor recreation close to home amid COVID-19 pandemic

Gary Garth Special to USA TODAY

Published 10:00 a.m. ET Sep. 6, 2020 | Updated 11:44 a.m. ET Sep. 7, 2020



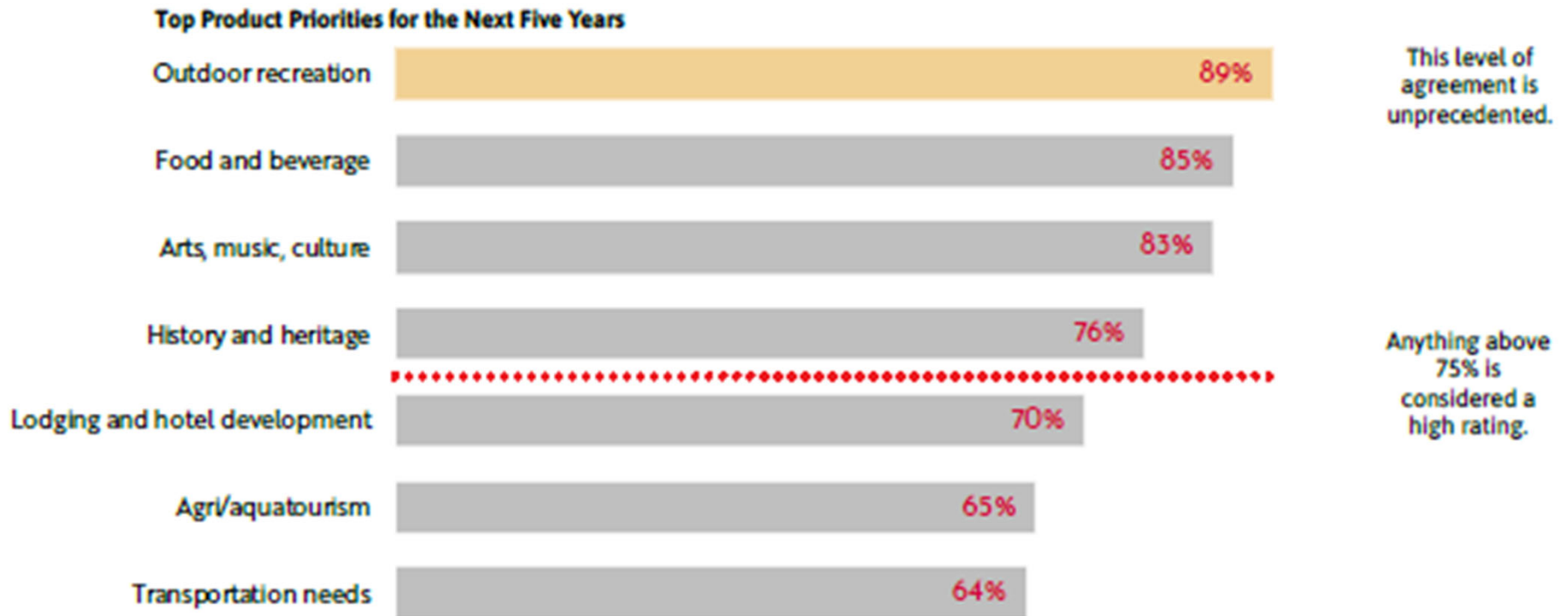


The industry identifies **outdoor recreation and history as primary lures**, as well as food, libations, water (rivers, lakes, the ocean), and landscapes as secondary lures. Paired together, these are the elements that make up vibrant communities that attract today's visitor.

What is the primary lure of your locality today?



3. Across the Commonwealth, **outdoor recreation tops the list as a priority area for product development**. With 89% of the industry identifying this as a priority, it demonstrates the universality and intensity of this focus.





VTC **Outdoor & Trail**
Development
Assistance

VTC
Outdoor & Trail
Development
Assistance

VIRGINIA IS FOR LOVERS

- Beaches to Bluegrass Trail
- **Clinch Valley River Initiative**
- Coastal Virginia Beer Trail
- Crooked Road – Virginia’s Heritage Music Trail
- **Eastern Shore Rails-to-Trails**
- Fields of Gold Bike the Valley
- Fish Virginia First Initiative
- Meherrin River Blueway and Canoe Trail
- Rocky Knob Heritage Project
- Round the Mountain Artisan Trails
- **Salty Southern Route**
- **Shenandoah Valley Rails-to-Trails**
- Southwest Virginia Brew Trail
- **Space Tourism Trail**
- Spearhead Multi-Use Recreational Trail
- Tobacco Heritage Trail
- Virginia Coal Heritage Trail
- Virginia Oyster Trail
- Wilderness Road – Virginia’s Heritage Migration Route

VTC
Marketing
Assistance
Programs

VIRGINIA IS FOR LOVERS

- **Brand Initiatives**
 - We'll Be Waiting
 - Find What You Love | Awareness
 - LOVE Lives Here
 - WanderLove (Statewide Road Trips)
 - Share What You Love (Spring 2021)
- **VTC Grant Programs**
 - VTC Marketing Leverage Program
 - WanderLove
 - Recovery Marketing Leverage Program
- www.VATC.org



WHAT'S
NEXT?

VTC
FUTURE
PLANS

VIRGINIA IS FOR LOVERS

- **DRIVE Tourism 2.0 Launch**
 - December 2, 2020 Webinar
 - Community Workshops begin in 2021
- **Share What You Love Campaign**
 - Spring 2021
- **Revive Trail Impact Study Efforts**

Rebuild **VA**

- Potential **funding** for trail support businesses
- Recently **revised guidelines** and additional funding
 - Has 250 or fewer full-time employees
 - Gross revenue of \$10 million or less
 - Operating prior to 3/12/2020

www.governor.virginia.gov/rebuildva/



Thank you!

www.pedbikeimages.org / Dan Burden

Trail Lightning Talks



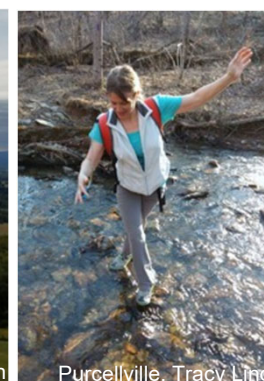
Loudoun County Emerald Ribbons

Tracy Lind, Potomac Field Representative
Loudoun, Fauquier, & Clarke County
& Blue Ridge Conservation Alliance Coordinator
The Piedmont Environmental Council

<https://loudouncoalition.org/events/categories/emerald-ribbons/>

Loudoun's Emerald Ribbons

Bringing people and nature together through a shared network of greenways that reveals the beauty of Loudoun County.



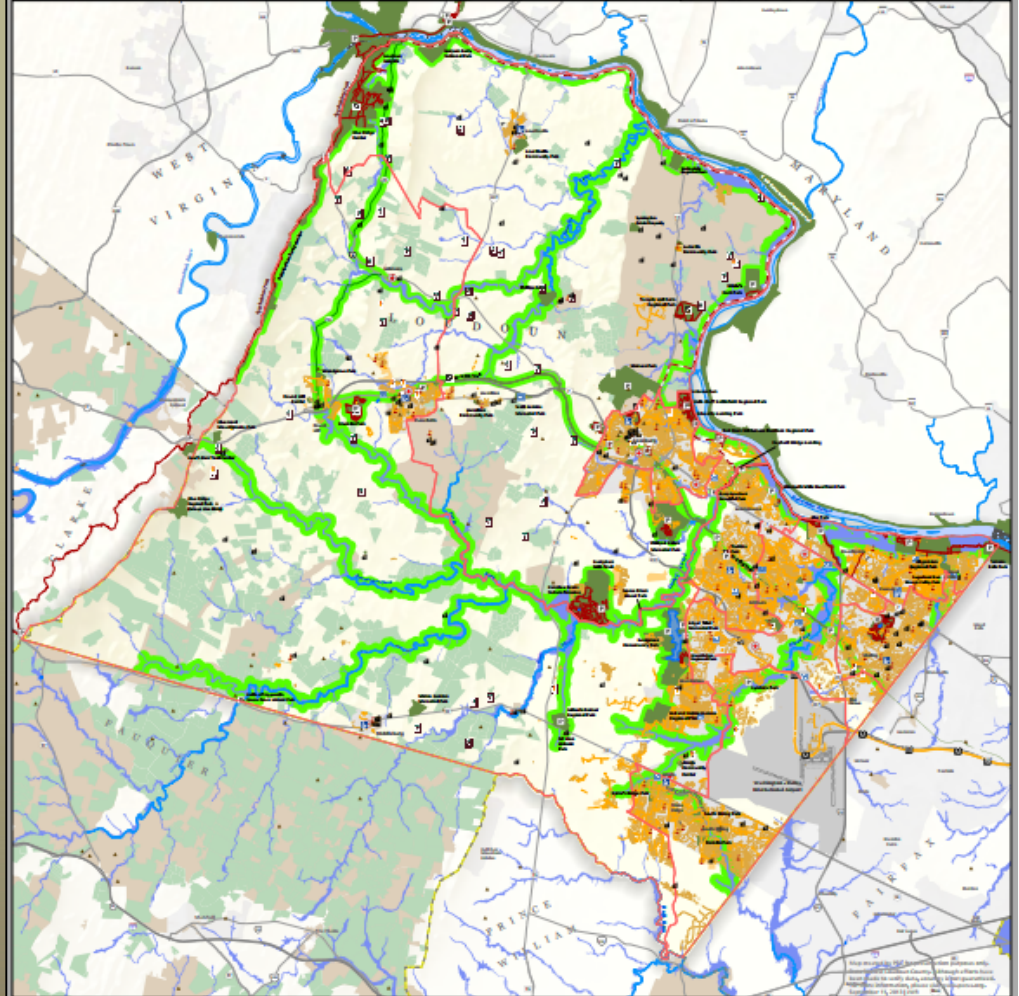
Proposal developed by a committee of the *Loudoun County Preservation and Conservation Coalition*, which is made up of over 40 county-wide organizations.

Loudoun's Emerald Ribbons

- Loudoun comprises 521 square miles, yet only **1.6% of this is public parkland**.
- Loudoun has only 87 miles of hiking trails, which does not meet **County standard** of 0.65 miles/1000 population or ~226 miles for 380K people.
- Open spaces and nature corridors are rapidly disappearing due to development.



Loudoun County Emerald Ribbons



Outdoor Recreation	Community / Commercial	Agrotourism
Emerald Ribbons	Libraries	Historic Sites National Register
Public Boat Access	Schools	Breweries
Trail Parking	Churches	Wineries
Horseback Riding Allowed	Park and Rides	Farmers' Markets
Sidewalks	Dulles Rail Stations	Conservation Easements
Shared Use Bike Paths	Future Silver Line	Historic Districts
Dirt Trails	County Owned Land	Flood Zones FEMA
Gravel Trails	Election Districts	
Existing Trails		



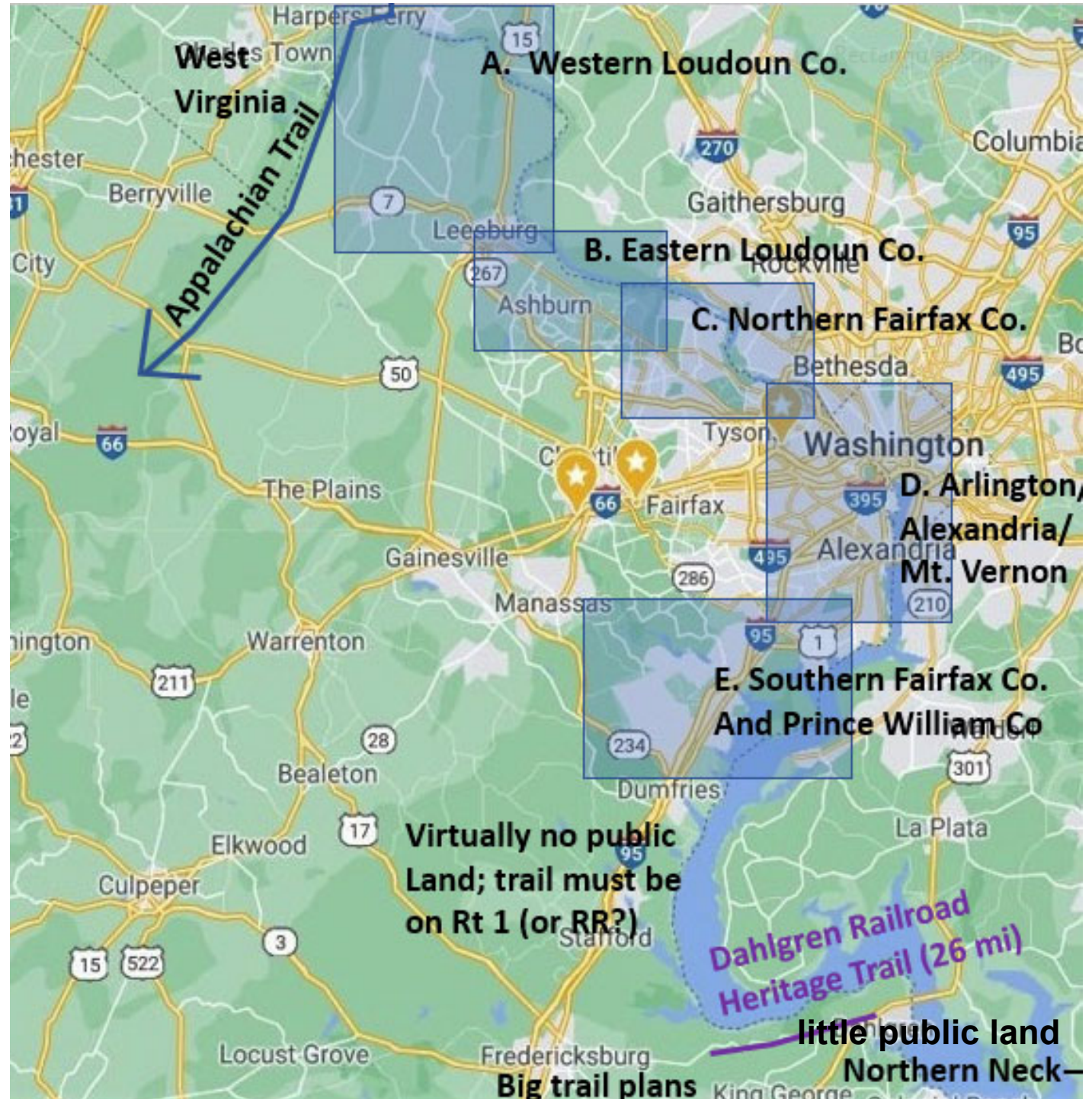
Potomac Heritage National Scenic Trail (PHNST) in Virginia



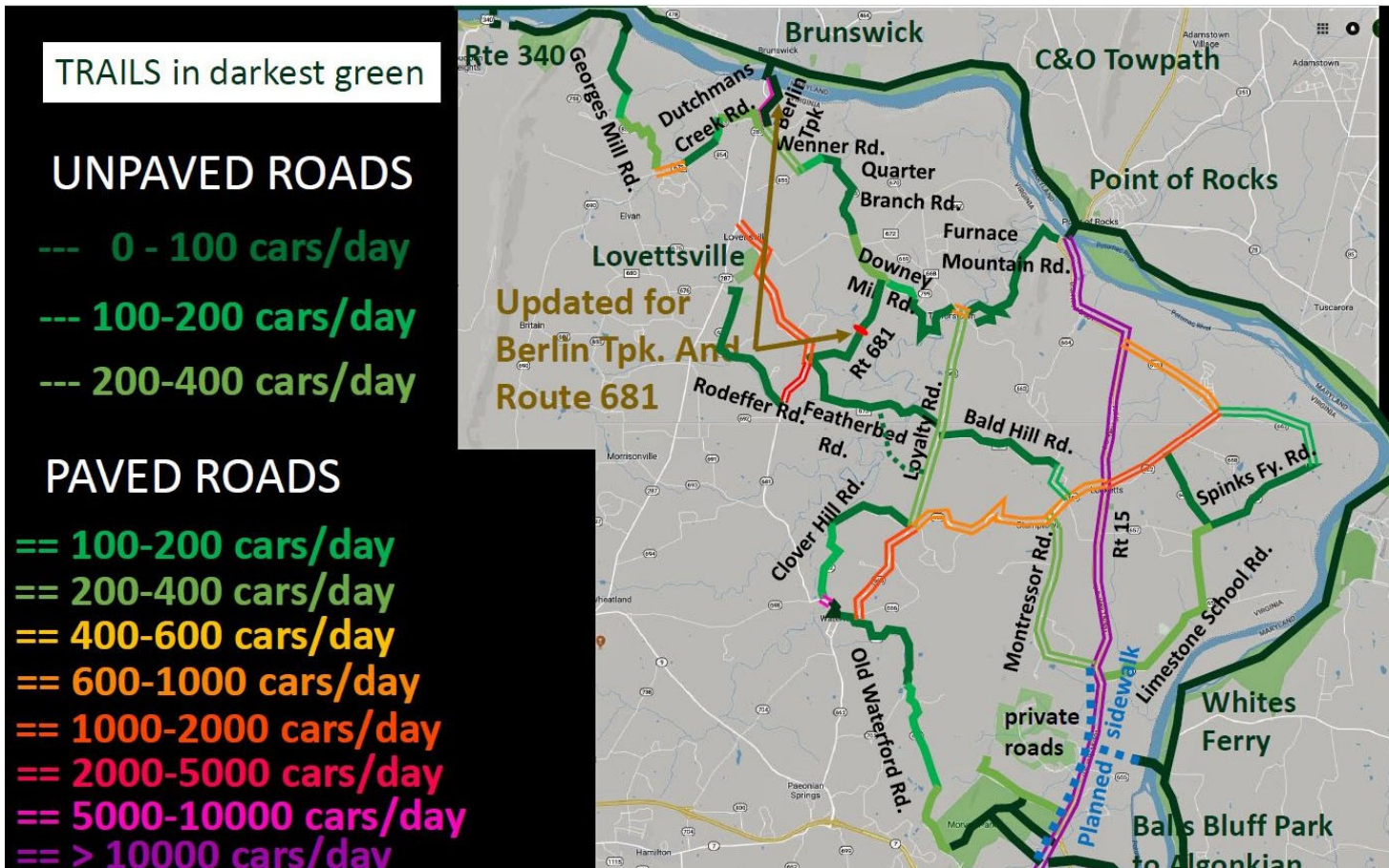
November 2020

Overview: PHNST in Virginia

Here, we will
summarize the 5
most active
areas;
(A,B,C,D,E),
with a highlight
of each.

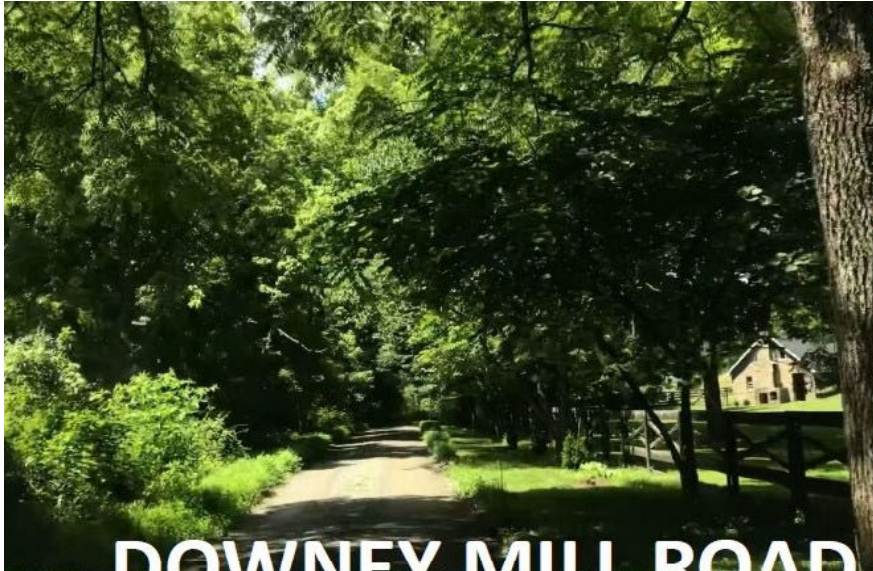


A. Western Loudoun Co.

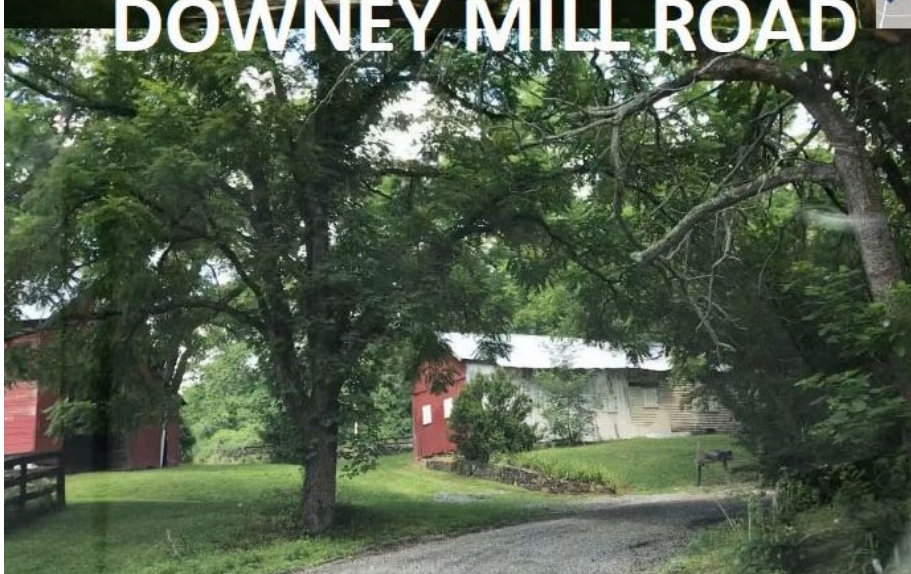
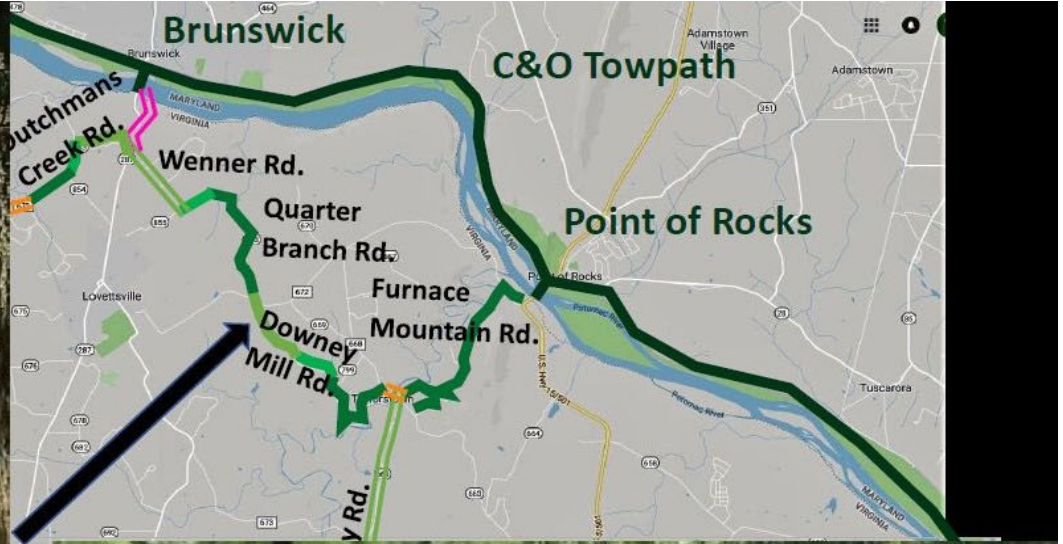


There is little public land here, but an unusually rich network of unpaved roads provides opportunities

A. Western Loudoun Co. *Highlight*



DOWNEY MILL ROAD



B. Eastern Loudoun Co.

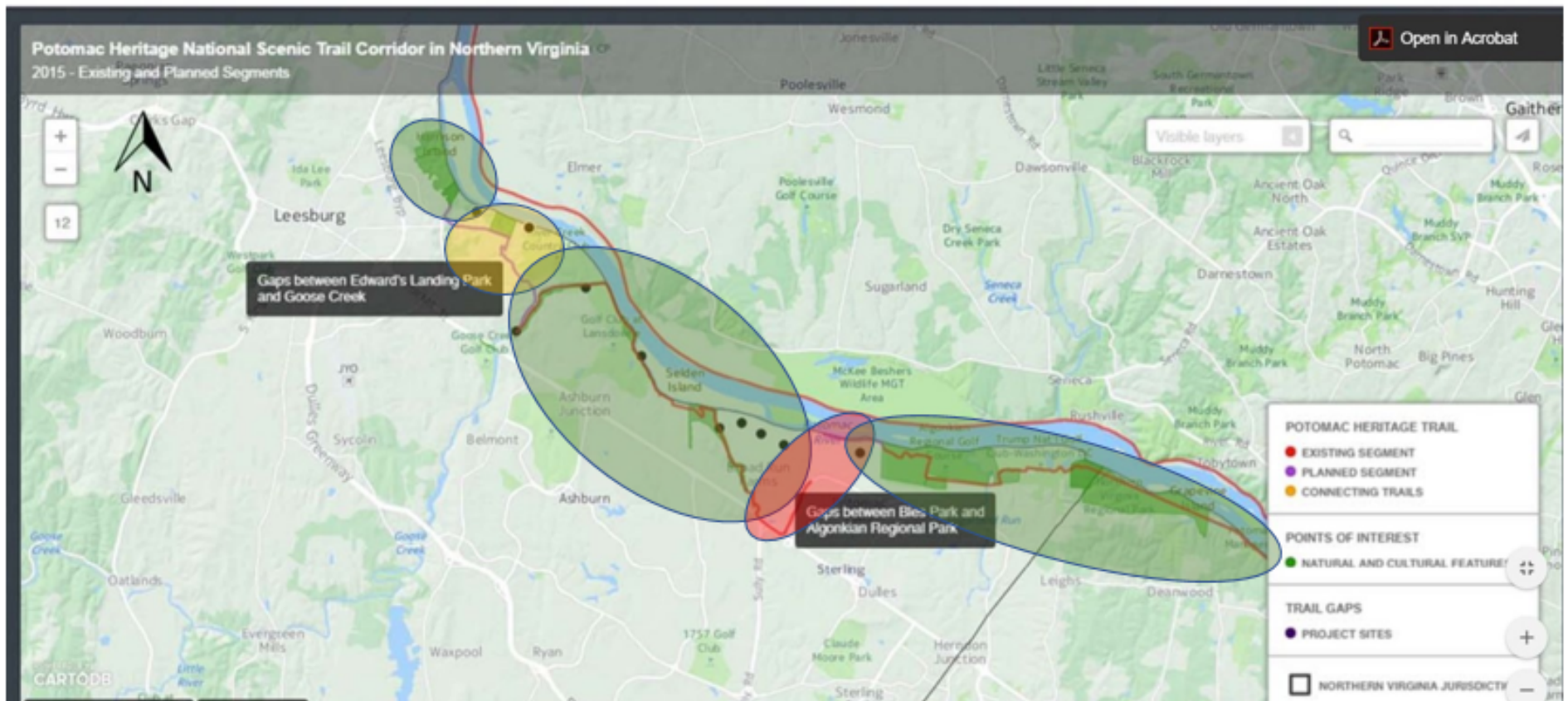
PHNST is:

In parks

(GAP)

On sidewalk

Figure 4 Map of Loudoun from Town of Leesburg to Fairfax County Line



Map from No Va Regional Commission's 2016 PHNST Gap Analysis (to be revised 2021)

B. Eastern Loudoun Co. *Highlight*



**Balls Bluff Battlefield
Regional Park**

C. Northern Fairfax Co.

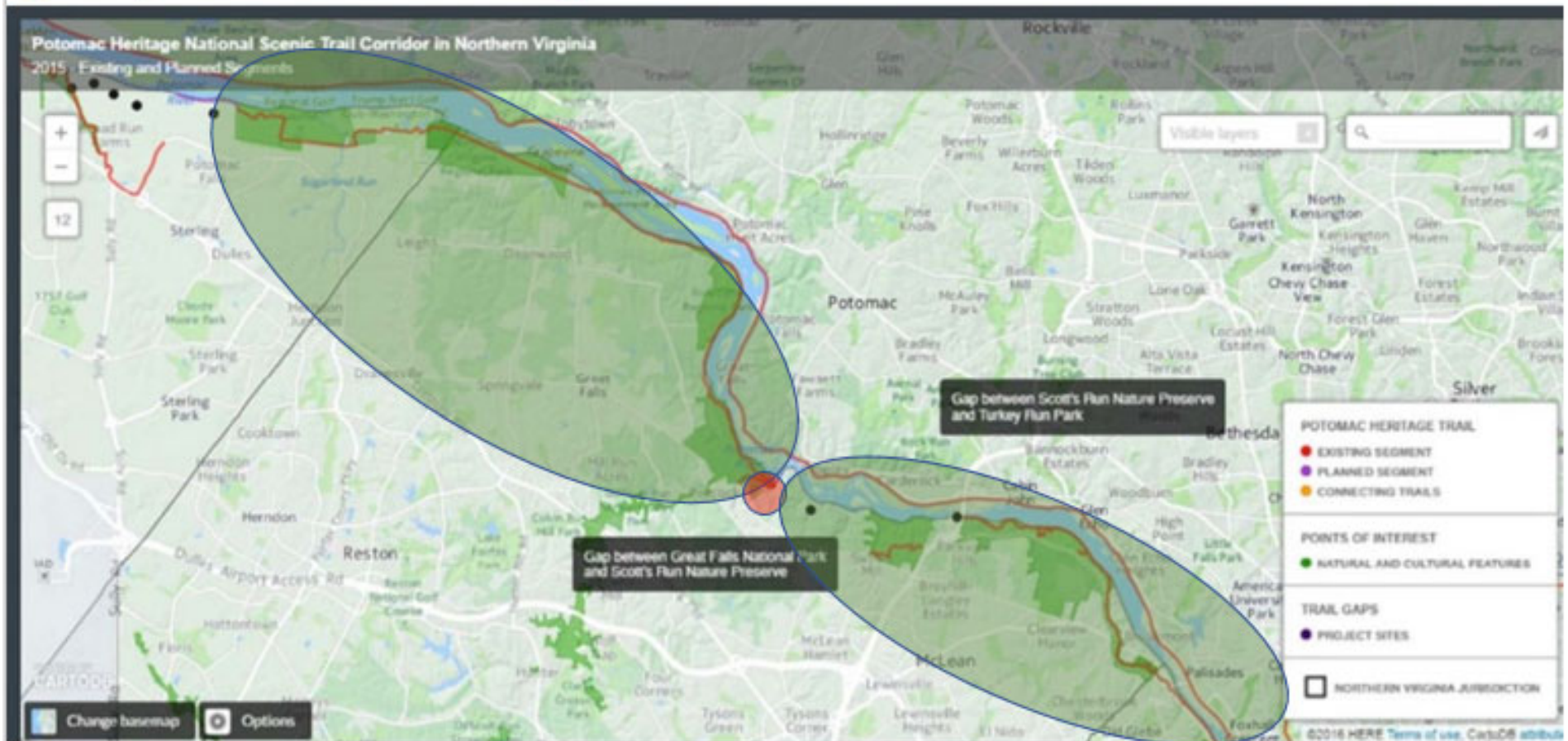
PHNST is:

(GAP)

In parks

On sidewalk

Figure 5 Map of Trail in Northern Fairfax County



Map from No Va Regional Commission's 2016 PHNST Gap Analysis (to be revised 2021)

C. Northern Fairfax Co. *Highlight* **Great Falls of the Potomac**

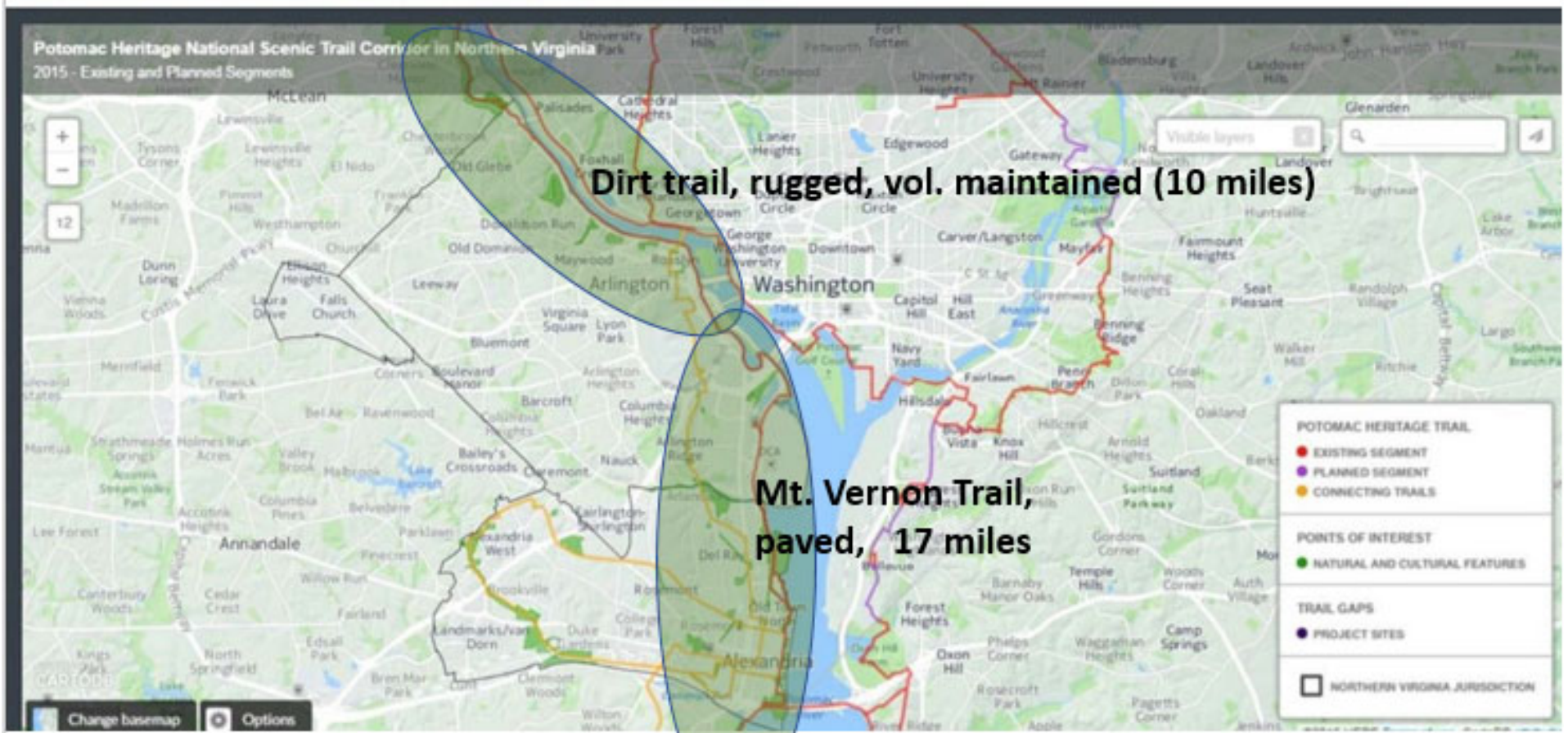


PHNST is: In parks

D. Arlington, Alexandria and Mt. Vernon On sidewalk

(GAP)

Figure 6 Map of Trail in Arlington County and City of Alexandria



Map from NVRC 2016 PHNST Gap Analysis (to be revised 2021)

D. Arlington, Alexandria and Mt. Vernon *Highlight* Mt. Vernon



PHNST is:

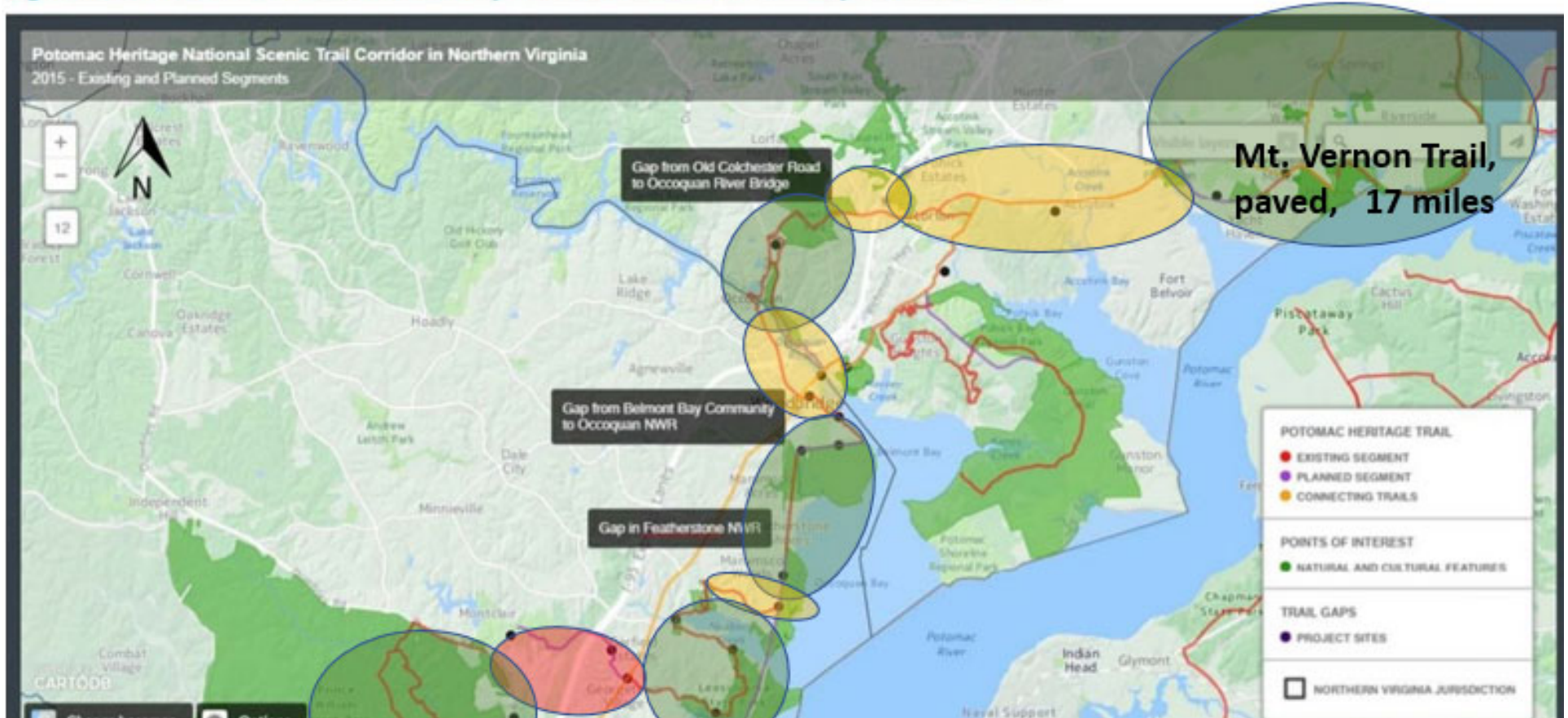
In parks

(GAP)

On sidewalk

E. Southern Fairfax & Prince William Co.

Figure 8 Corridor in Prince William County from Fairfax Border to Leesylvania State Park



Map from NVRC 2016 PHNST Gap Analysis (to be revised 2021)

E. Southern Fairfax and Prince William Co. *Highlight*



the Neabsco Boardwalk

Trans-Virginia Bike Route

David Landis

Village to Village Press, LLC

www.v2vtrails.com

www.villagetovillagepress.com

TransVirginia Bike Route



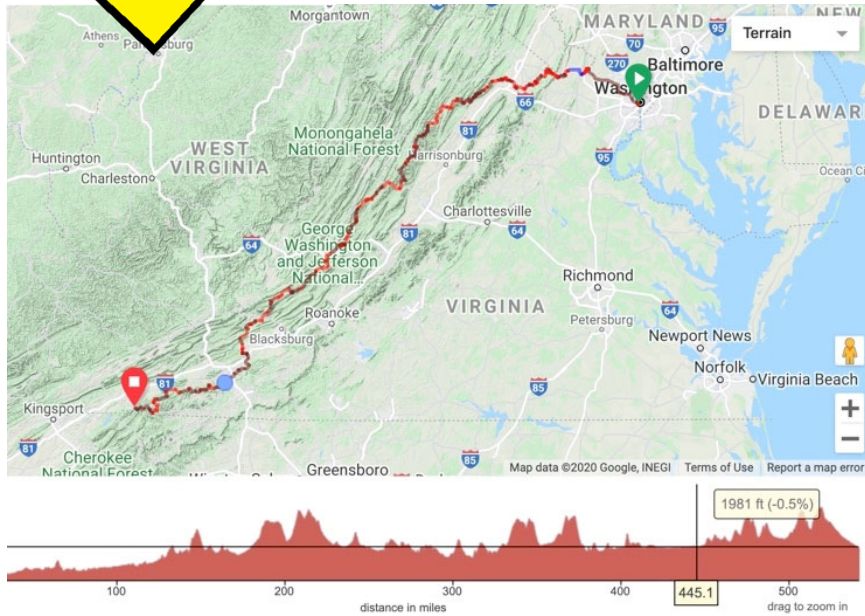
November 17, 2020

By David Landis

Virginia State Trails Advisory Committee



TransVirginia Bike Route



- Ride 550 miles from Washington DC to Damascus
- Mostly unpaved forest roads and rail trails
- Explore Virginia's rugged backcountry by bike and local communities across the state
- Gravel/gravel+ routes accessible to a variety of rider levels
- Two routes
 - TransVA 550: 542 miles, 43,742 feet (Original Route)
 - Valley 520: 521 miles, 32,722 feet (Added Summer 2020)



TransVA
Highlights

Gorgeous
gravel roads!







TransVA
Highlights

millions of
acres of public
land



TransVA
Highlights

regular services
for resupply,
camping,
lodging

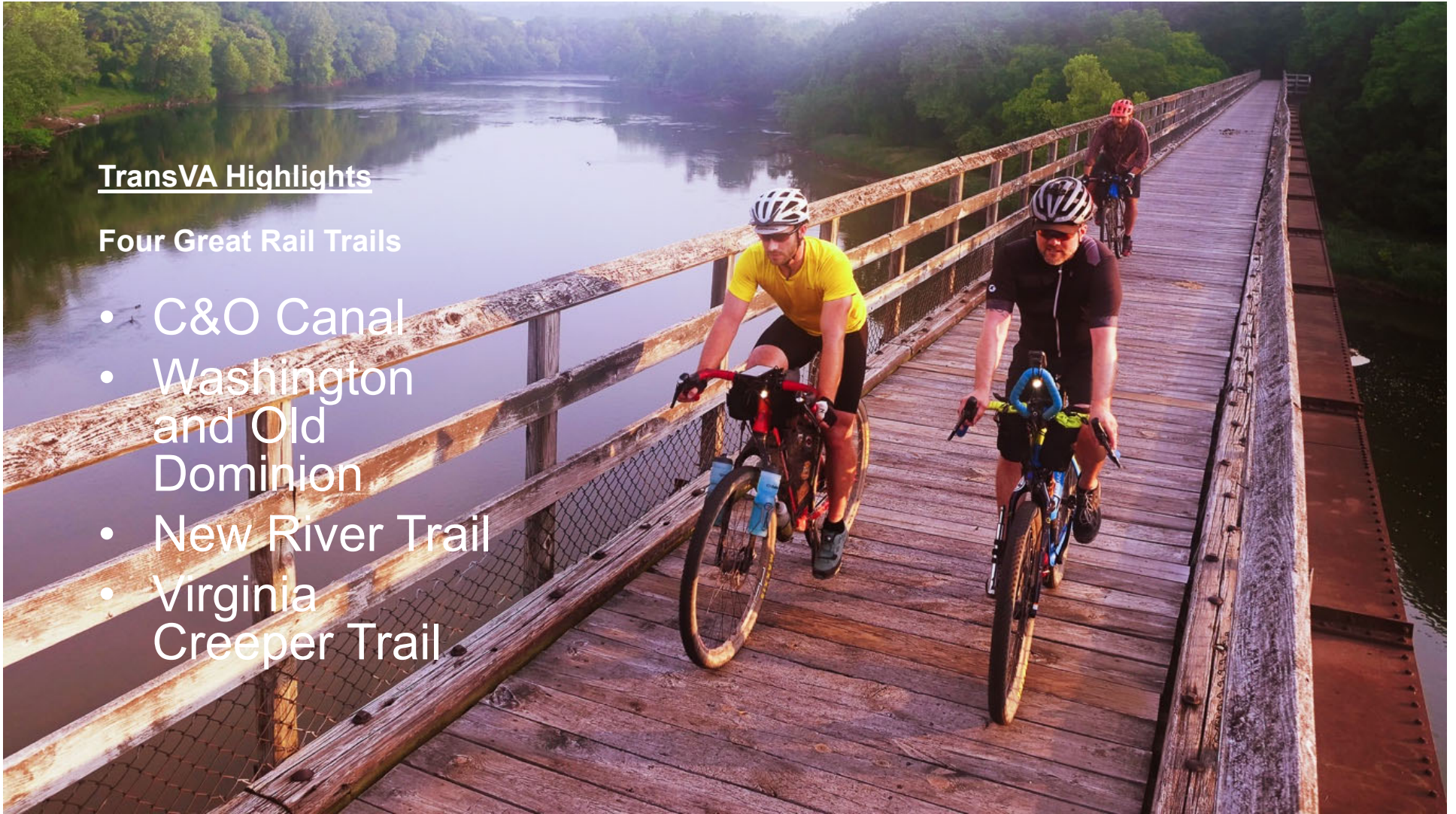


TransVA
Highlights
Country
stores

TransVA Highlights

Four Great Rail Trails

- C&O Canal
- Washington and Old Dominion
- New River Trail
- Virginia Creeper Trail





TransVA
Highlights

paralleling
the Appalachian
trail



TransVA
Highlights

Connecting
diverse ends of
the state via local
communities

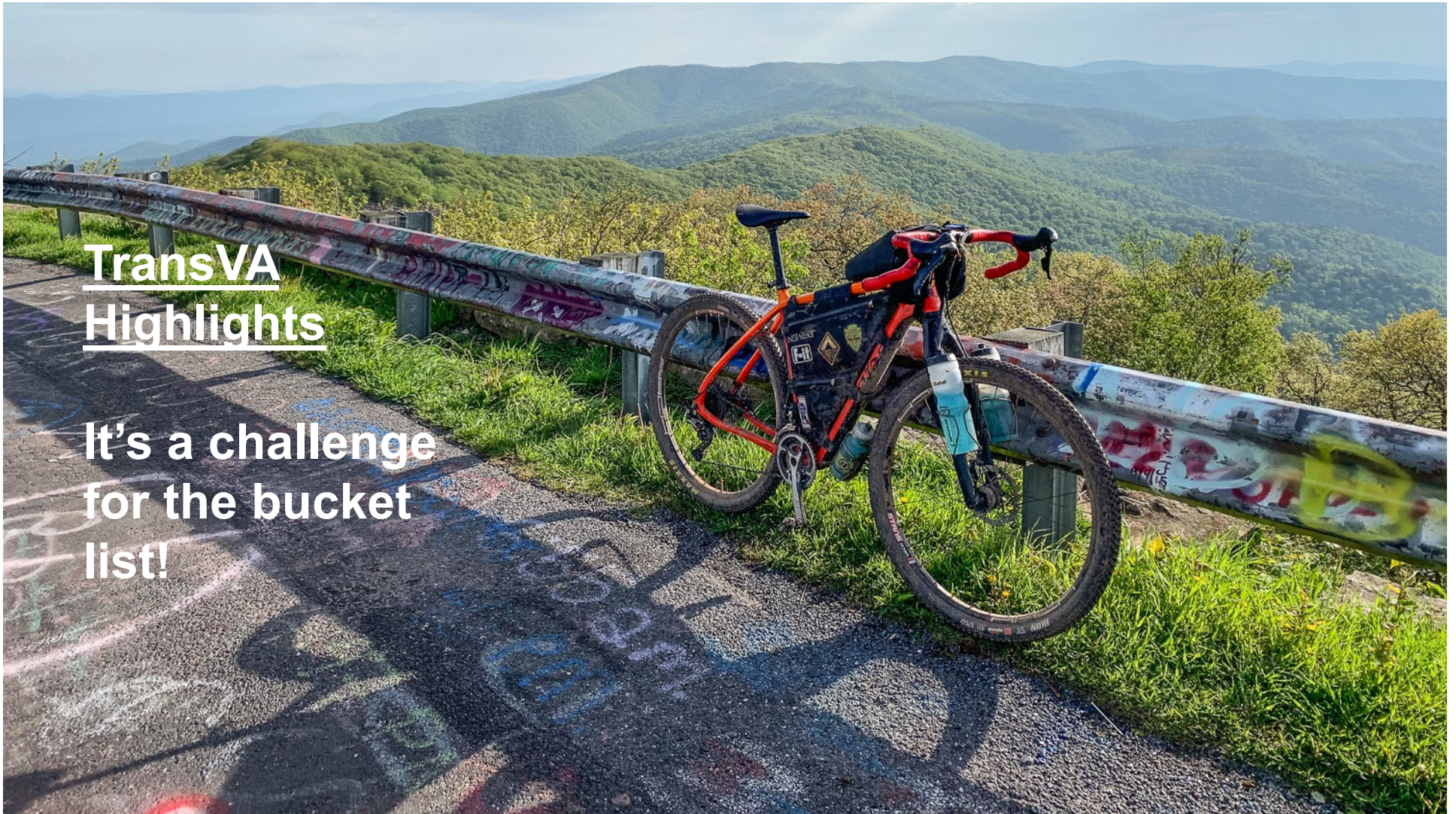


TransVA Highlights

Built upon local
bike community
knowledge

TransVA Highlights

It's a challenge
for the bucket
list!

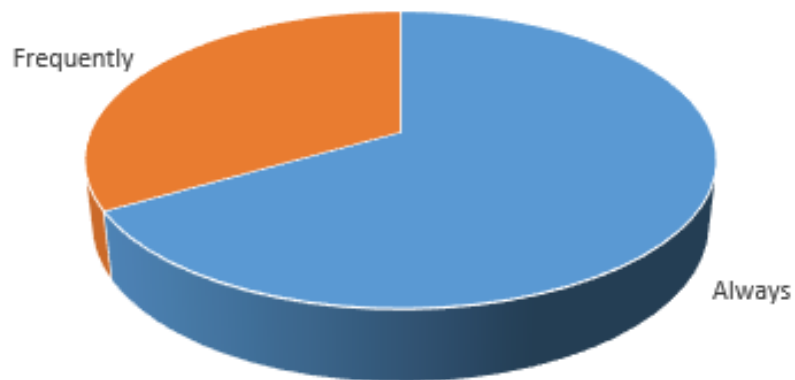


Input since last meeting

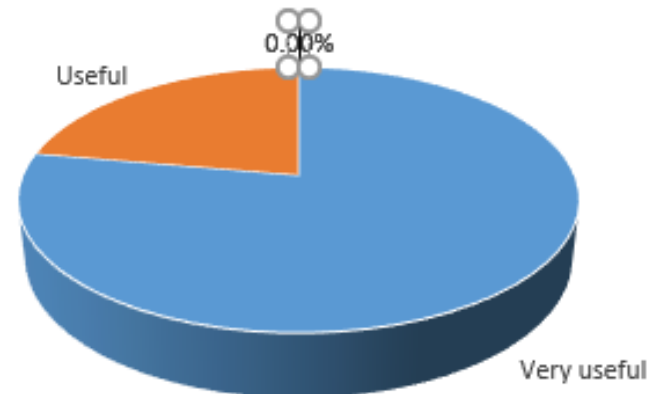
- Responses to STAC Survey on E-newsletter
- Comments received on James River Planning Efforts
- Hub site feedback

STAC Survey Results

How often do you read our newsletter?



How useful do you find the information in the E-newsletter?



3. Rate your satisfaction with the following features of this newsletter.

Top number is the count of respondents selecting the option. Bottom % is percent of the total respondents selecting the option.

	Very Satisfied	Neutral
Length	4 44%	0 0%
Design	2 22%	0 0%
Content	5 56%	0 0%
Images	3 33%	0 0%
Color	4 44%	1 11%
Layout	2 22%	1 11%

4. Rate the following content items in the newsletter based on their importance.

Top number is the count of respondents selecting the option. Bottom % is percent of the total respondents selecting the option.

	Very Important	Fairly Important
Advocacy	4 50%	2 25%
Grants	5 63%	3 38%
Planning	5 63%	3 38%
Management	3 38%	5 63%
Trail Happenings	0 0%	6 75%
Webinars	0 0%	7 88%
Calendar	1 13%	3 38%
Articles	4 50%	2 25%

<https://trails-vdcr.hub.arcgis.com/>



VDCR Trails Collaboration Page

The VDCR Trails Collaboration Page is designed for federal, state and local governments to participate in uploading and managing the statewide trails dataset.

Collecting data and collaborators...

Topics for next meeting

- Requested potential speakers
- Other topics?
- Shenandoah Valley Rail Trail feasibility study
- Training topics needed?
- E-bike impacts

Natural

Safety

Social

Issues
Impacts/Benefits

Erosion /
Trail Braiding
"soil impacts"

Habitat
Disturbance
(Flora/Fauna)

Water Quality

Fire Risk (batteries)

E-Bike User Injury

Non-User Injury

Rental vs. Owned

Speed

User Volumes /
Conflicts

Cost of
management

User Behavior/
Trail Etiquette
E.g. overtaking on singletrack hills

Increased Access /
Longer Distance /
Battery Range

User
responsibility /
faith

Increased
Non-Cyclist Access

Disabled Rider
Access

User types / purposes /
places
also: land managers vs land users

Regulation
Challenges
Timeline/evolution of
devices

Sound
Mode Shift

No MUTCD-
like manual
for trails

Trail Design /
Engineering
Signs

Education &
Communication
(User / Non-User)
perception vs. reality
"Slippery Slope"

Emergency
Response
Enforcement — speed
limit (user behavior vs.
device capacity)

E-Bike vs Regular
Bike — is there a
difference?
E-Bike
Format vs. Class
(e.g. size/scale)

Next Virtual Meeting

Spring 2020

Send comments and suggested future topics to be addressed at next meeting through chat bar and email

jennifer.wampler@dcr.virginia.gov